

Sunset Settimanale

Studiopepe

2026



Settimanale con sette cassetti a estrazione totale. Struttura in legno curvato disponibile nelle seguenti finiture: frassino tinto nero a poro aperto oppure legno laccato opaco nei colori "Bianco Camargue", "Beige Matera", "Sabbia del Nilo", "Rosa Jaipur", "Rosso Persia", "Bordeaux Etruria", "Verde Provenza", "Blu Pacifico", "Grigio Londra", "Nero Giza".

Top in legno laccato opaco nei colori del campionario.

Disponibile anche rivestito in pelle fard nei colori del campionario oppure in marmo Arabescato Orobico Rosso satinato, Dover White satinato, Nero Marquinia levigato opaco e Travertino Romano spazzolato naturale (non resinato).

Frontali cassetti disponibili in legno laccato opaco nei colori del campionario oppure rivestiti in pelle fard nei colori del campionario.

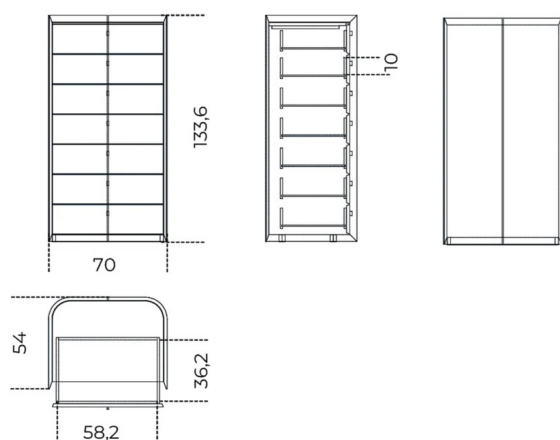
Dettagli in ottone lucido.

Cm (L x P x H)

70 x 54 x 133,6

Inches (L x P x H)

27³/₄ x 21¹/₂ x 52³/₄

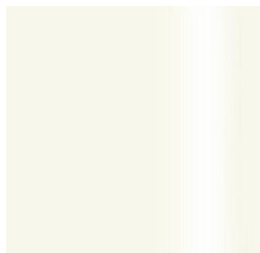


Finiture

Legno



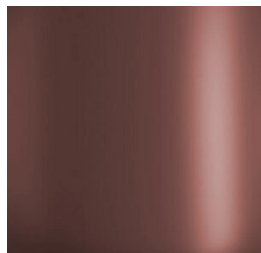
"Beige Matera" laccato
opaco



"Bianco Camargue"
laccato opaco



"Blu Pacifico" laccato
opaco



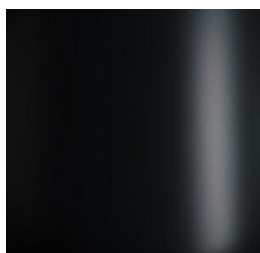
"Bordeaux Etruria"
laccato opaco



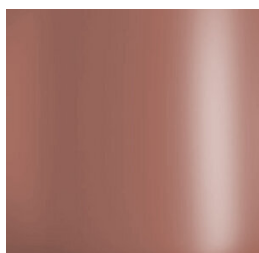
Frassino tinto nero a
poro aperto



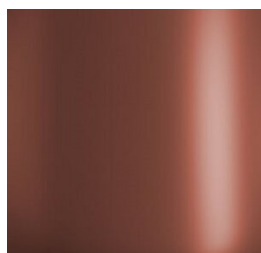
"Grigio Londra" laccato
opaco



"Nero Giza" laccato
opaco



"Rosa Jaipur" laccato
opaco



"Rosso Persia" laccato
opaco

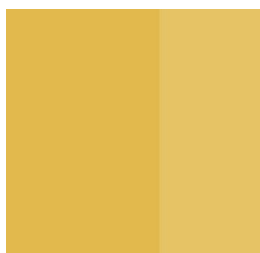


"Sabbia del Nilo" laccato
opaco



"Verde Provenza"
laccato opaco

Metallo



Ottone lucido

Marmo



Dover white



Nero Marquina



Orobico Arabescato
Rosso



Travertino romano

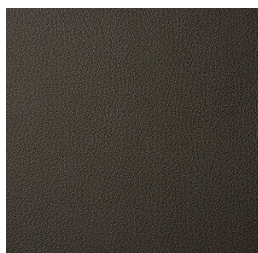
Pelle Cat.L1



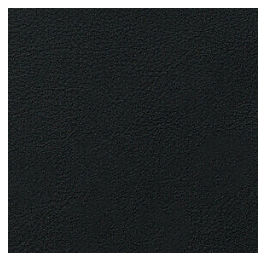
Fard amaranth 2337



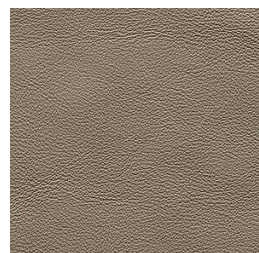
Fard amber 2343



Fard anthracite 2379



Fard black 2398



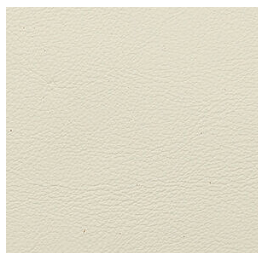
Fard clay 2303



Fard deer 2346



Fard ecru 2304



Fard ivory 2310



Fard loden green 2357



Fard milk 2300



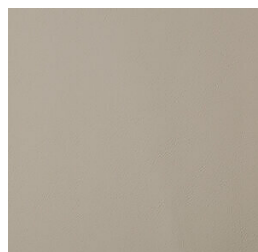
Fard nude 2334



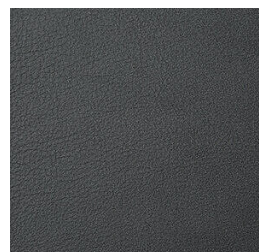
Fard otter 2348



Fard silt 2324



Fard silver 2302



Fard slate 2386



Fard tan 2305